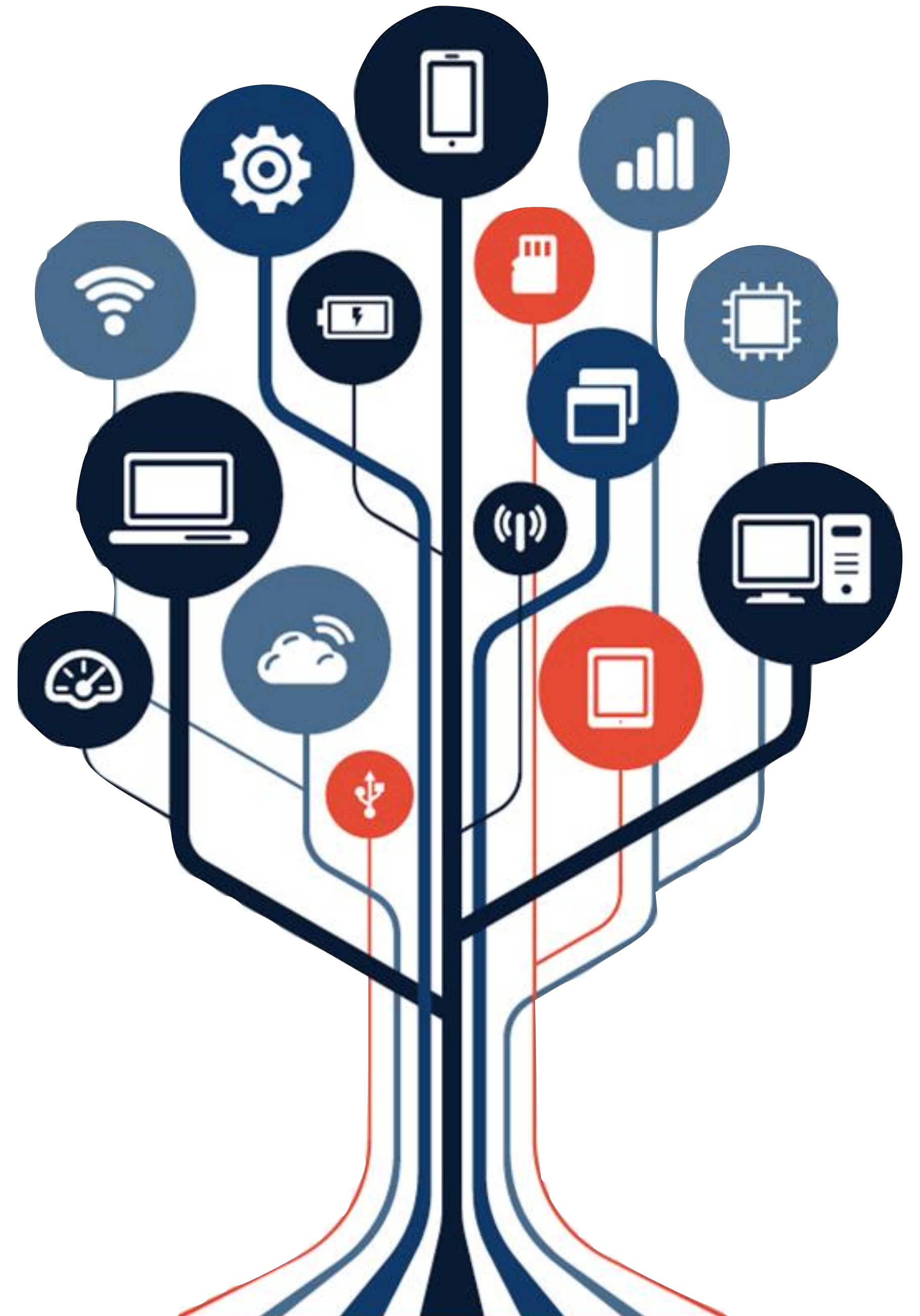


The Antifragile Grid

SEYI FABODE



*'In general it is not
the owner of stage
coaches who builds
railways'*

Joseph Schumpeter

The digital utility of the future captures opportunities all along the value chain.







The required
expertise will
come from
outside the
industry...

The New York Times

SCIENCE

If You Have a Problem, Ask Everyone

By CORNELIA DEAN JULY 22, 2008

Dr. Lakhani said his study of InnoCentive found that “the further the problem was from the Solver’s expertise, the more likely they were to solve it,” often by applying specialized knowledge or instruments developed for another purpose.

Swarming



Available online at www.sciencedirect.com

ScienceDirect

Procedia Computer Science 32 (2014) 870 – 875

Procedia
Computer Science

1st International Workshop: From Dependable to Resilient, from Resilient to Antifragile
Ambients and Systems (ANTIFRAGILE 2014)

Engineering Antifragile Systems: A Change In Design Philosophy

Kennie H. Jones *

NASA Langley Research Center, Hampton, VA 23681



ANTIFRAGILITY

...less vulnerable to randomness and chaos, but actually “antifragile” — poised to benefit or take advantage of stress, errors and change, the way, say, the mythological Hydra generated two new heads, each time one was cut off.











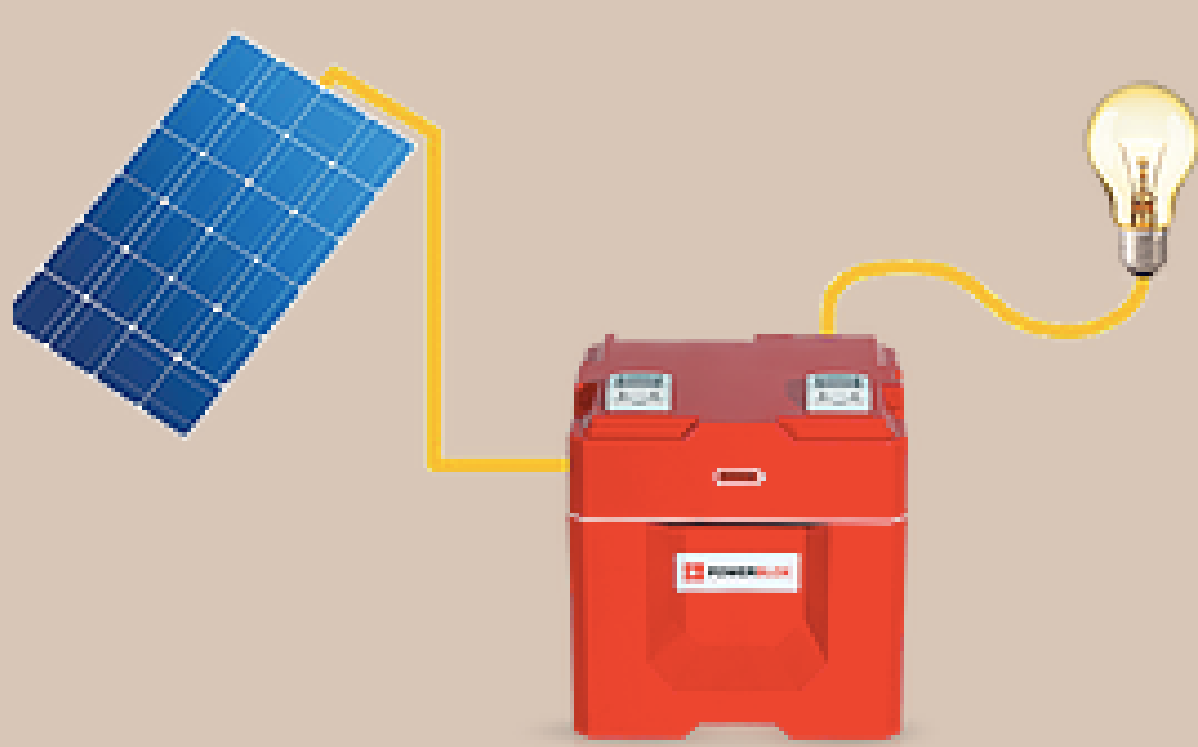


WELCOME TO THE TOKEN GENERATION EVENT

Re-imagining the Electricity Network

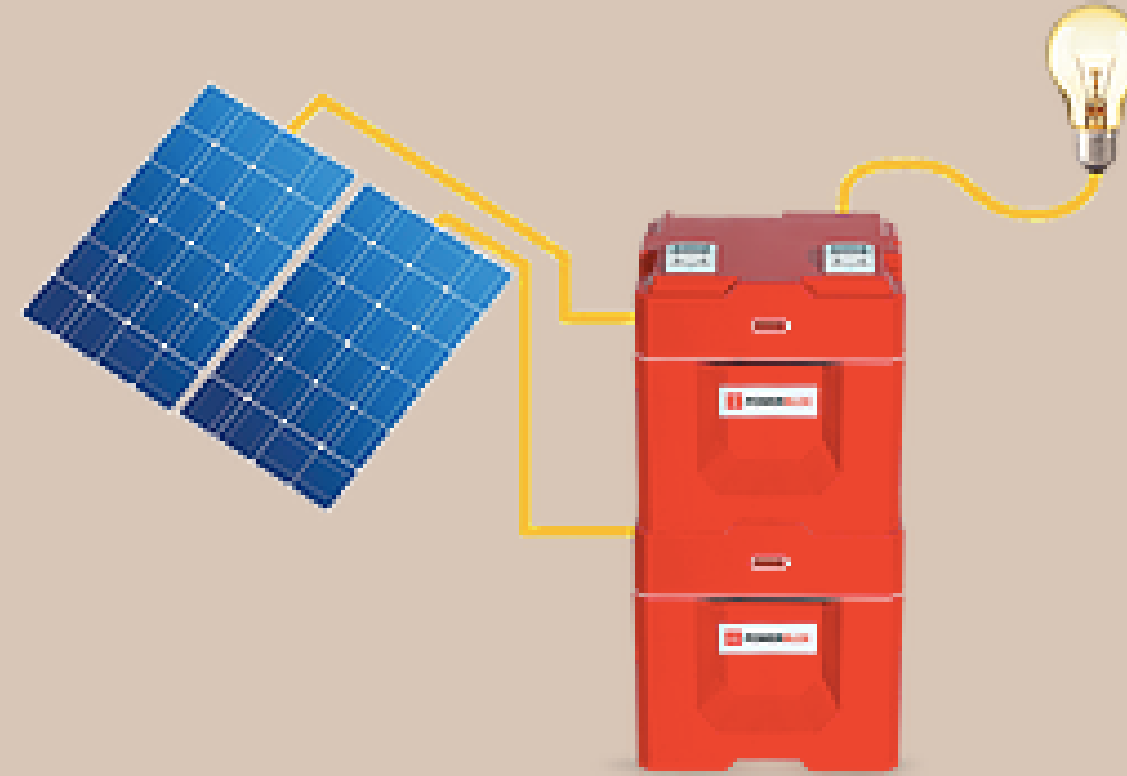
Enter your email to subscribe to our newsletter.

[SUBSCRIBE](#)



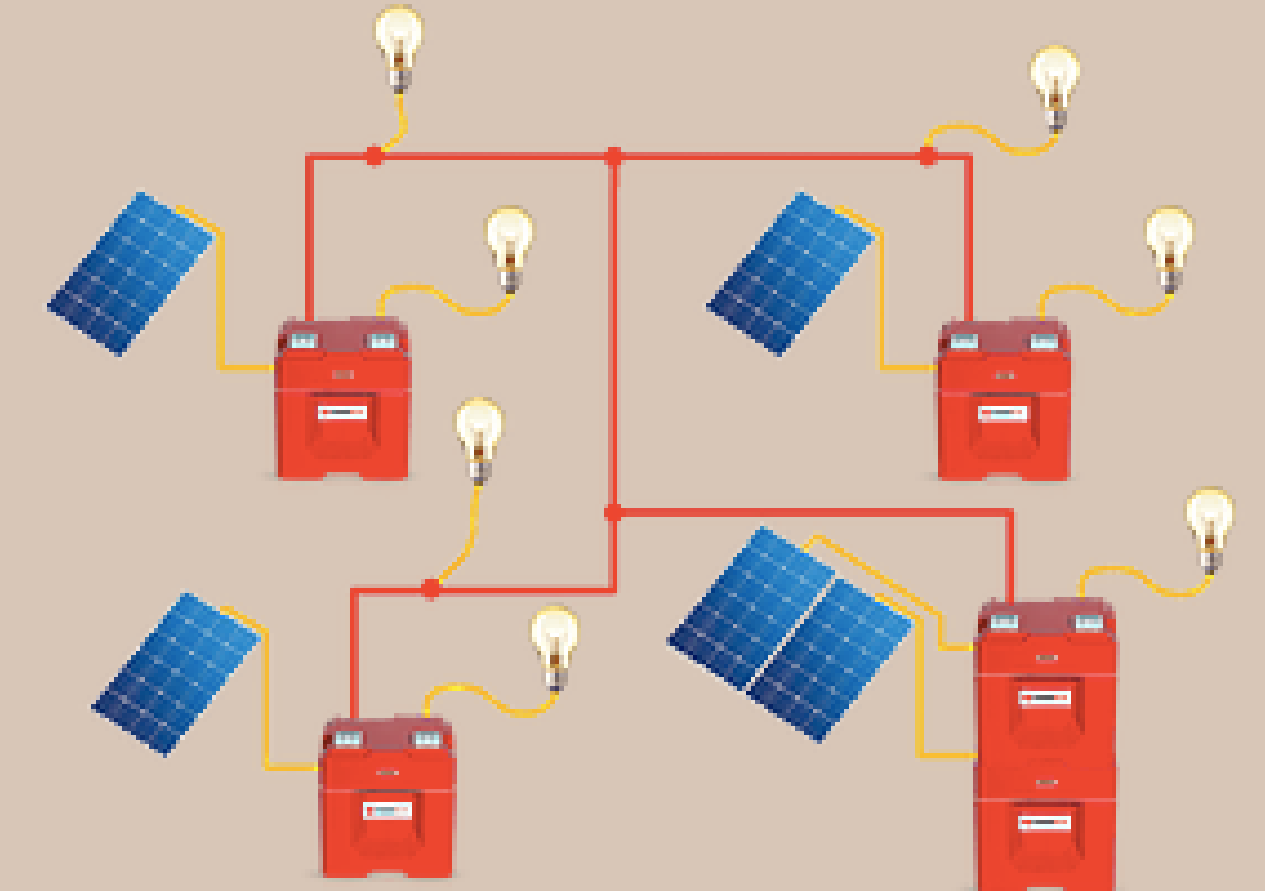
STANDALONE POWER-BLOX

Instant plug & power. Directly
supplies 230V AC. Independent
from the public grid.



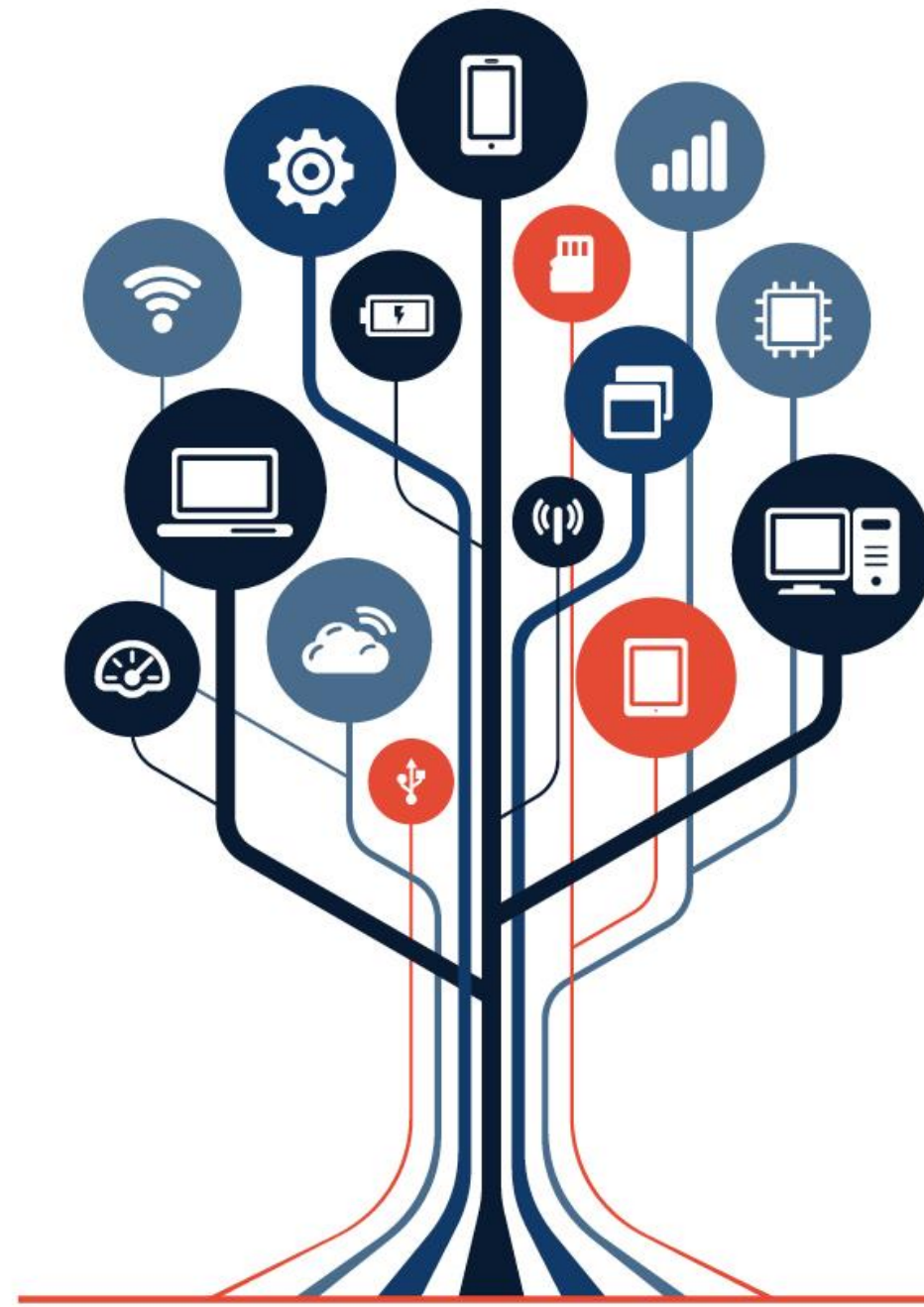
STACKING POWER-BLOX

Get more energy and
power. Expand by stacking units.



BUILD A SWARM

More units increase the stability and
power of the mini-grid. Every
consumer in the system can use the
full power of all units.



The Antifragile Grid

SEYI FABODE



Search and analyze innovative technology for the utility industry.

UtilityRadar helps you identify the innovative companies you are looking for, to move your utility forward. Start searching!



UtilityRadar

I'm looking for a/an


Select a company ▼

company focused on providing solutions for

Segment Name ▼

Find Companies!



POWER  SWITCH

Account # 53183900000

Jack Power

2100 N Avenue, Chicago

312-300-1000

Billing Summary

Previous Balance - PAID \$35.46

Amount Due - May 5, 2012 **\$34.72**

METER INFO

READ DATE: 4/12 (29 Days)

METER # 092800000

LOAD TYPE: GENERAL

PRESENT (kWh)

PREVIOUS (kWh)

MULTIPLIER

USAGE

95477 – 95279 x 1 = **198 kWh**

173

205

311

344

386

354

215

222

193

258

251

204

198


2011 A M J J A S O N D J F M A 2012

13 MONTH USAGE PROFILE (TOTAL kWh)

SERVICE INFO

RESIDENTIAL - MULTIPLE

“Alternative Supplier”

SUPPLY 

\$16.30

Electricity Supply Charge

198 kWh x 0.06968

13.80

Transmission Service Charge

198 kWh x 0.00765

1.51


Purchased Electricity Adjustment

.99

PRICE TO COMPARE

(0.06968 + 0.00765) x 100

7.73¢

 ComEd

DELIVERY

\$15.16

Customer Charge

7.21

Standard Meter Charge

2.86

Distribution Facilities Charge


198 kWh x 0.02444

4.84

IL Electricity Distribution Charge

198 kWh x 0.00126

.25

 **TAX / OTHER**

\$3.26

Environmental Cost Recovery Adj

198 kWh x 0.00027

.05

Energy Efficiency Programs

198 kWh x 0.00129

.26

State Tax

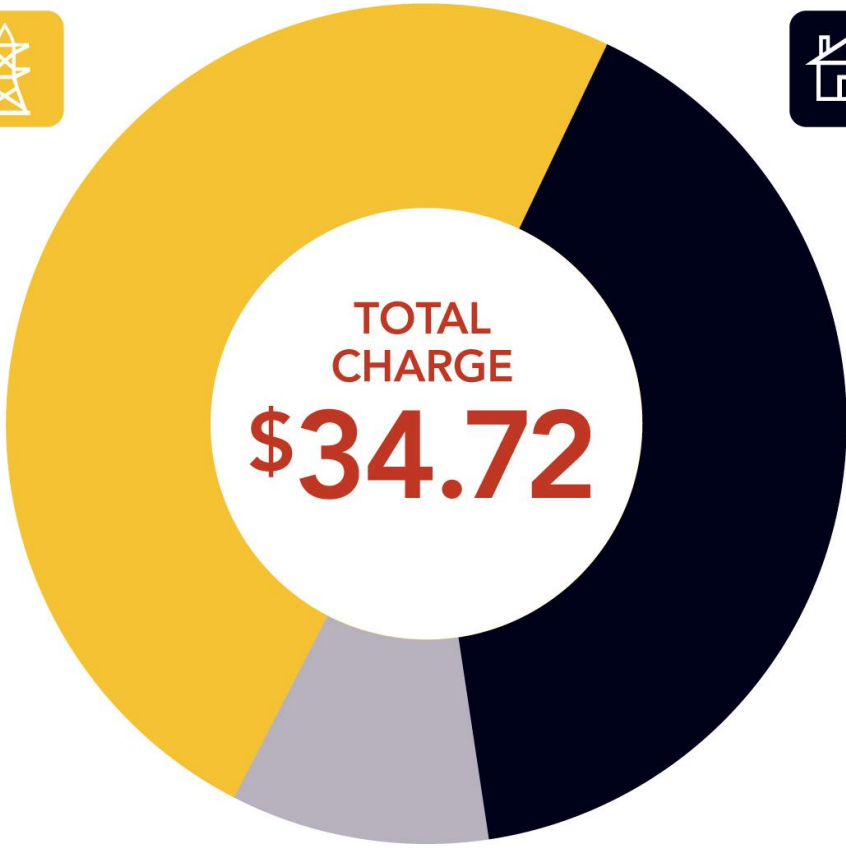
.65

Municipal Tax

1.25

TOTAL CHARGE

\$34.72





The Antifragile Grid

SEYI FABODE