

# Craftsbury, Vermont Community Profile



## Prepared for the Vermont Council on Rural Development's – Craftsbury Community Visit

What follows is a collection of indicators and information about the Craftsbury community and its residents. These data are meant to inform the Vermont Council on Rural Development community visit, but certainly have many other uses.

The data profile relies upon the following data sources:

- The US Census Bureau's American FactFinder\* – <http://factfinder2.census.gov>
- The Vermont Dept. of Labor's Labor Force & Unemployment site – [www.vtlmi.info/labforce.cfm](http://www.vtlmi.info/labforce.cfm)
- The Local Employment Dynamics site – <http://lehd.ces.census.gov/led/>

\*This report utilizes both Decennial Census and American Community Survey (ACS) Census Bureau data sets. Data comparisons between these two sources should be made with the knowledge that they employ different methodologies. The American Community Survey employs sample data to produce estimates that include Margins of Error. In geographies with small populations the margins can be significant. ACS margins of error are not included below, though we ask that you keep this in mind when reading.

Additional data provided for context were sourced from:

- The Craftsbury municipal website - [townofcraftsbury.com](http://townofcraftsbury.com)
- The Vermont Encyclopedia

### About the Vermont State Data Center

The Vermont State Data Center (VT SDC), funded by the State of Vermont and located at UVM's Center for Rural Studies, acts as liaison between the U.S Census Bureau and Vermont data users. The VT SDC provides online and person to person data services, education and outreach across Vermont. More information about the Vermont State Data Center can be found at: [uvm.edu/crs/vtsdc](http://uvm.edu/crs/vtsdc).

This report prepared by: *Mike Fife, Jen Muncil & Michael Moser*

---

## Introduction

---

Craftsbury aptly describes itself as: “A picturesque country town located in the Northeast Kingdom, with rolling hills, white picket fences and family run farms. The town includes Craftsbury Common, Craftsbury Village, East Craftsbury, Collinsville and Mill Village, which have a combined year-round population of 1,206 (2010 decennial census). Craftsbury includes approximately 26,000 acres (36 square miles) and is in Orleans County.” (<http://www.townofcraftsbury.com/>) Craftsbury is surrounded by the towns of, Greensboro, Hardwick, Wolcott, Hyde Park, Eden, Lowell, Albany and Glover. Like the surrounding towns, Craftsbury’s population expands in the summer season as it welcomes vacationers, visitors and its summer residents to town.

The Craftsbury Green is home to the United Church, The Craftsbury Academy, The Craftsbury Public Library and Sterling College. As can be seen in detail in the following report, almost half of those employed in Craftsbury work in education. The Craftsbury Outdoor Center is located on Great Hosmer Pond and hosts running, Nordic skiing, sculling and other outdoor activities.

Craftsbury was originally chartered as a town on August 23<sup>rd</sup> of 1781 under the name Minden by Timothy Newell, Ebenezer Crafts and 61 other associates. The town changed its name to Craftsbury in 1790 (Vermont Place-Names Footprints of History).

Sources: [www.townofcraftsbury.com](http://www.townofcraftsbury.com) ; Esther Munroe Swift, *Vermont Place-Names Footprints of History*

---

## Civics

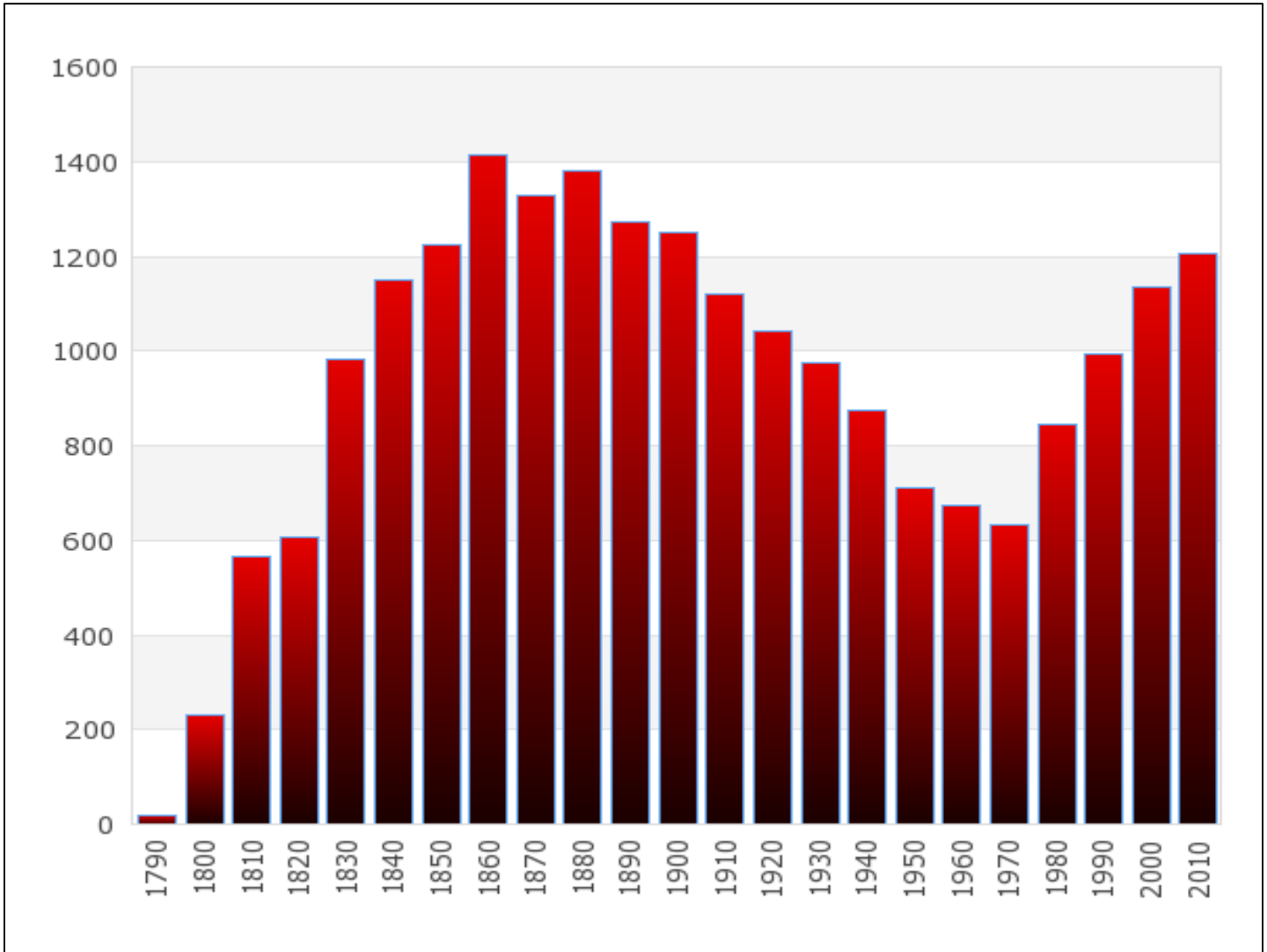
---

Year of Incorporation or Charter	August 23, 1781
Type of Entity	Town
County	Orleans
Regional Planning Commission	Northeastern Vermont Development Association
Incorporated and unincorporated places	Four unincorporated areas include: Craftsbury Common, Mill Village, North Craftsbury and East Craftsbury.
Municipal Plan	Yes
Zoning Bylaws	Yes
Subdivision Bylaws	Yes

Source: *Vermont Indicators Online: Civics & Planning*

## Population

### Long Term Population History



Source: Decennial Census data retrieved from Vermont Indicators Online

### Recent Population Change

Craftsbury		Craftsbury as % of Orleans County		Orleans County		Vermont	
2000	2010	2000	2010	2000	2010	2000	2010
1,136	1,206	4.3%	4.4%	26,277	27,231	608,827	625,741

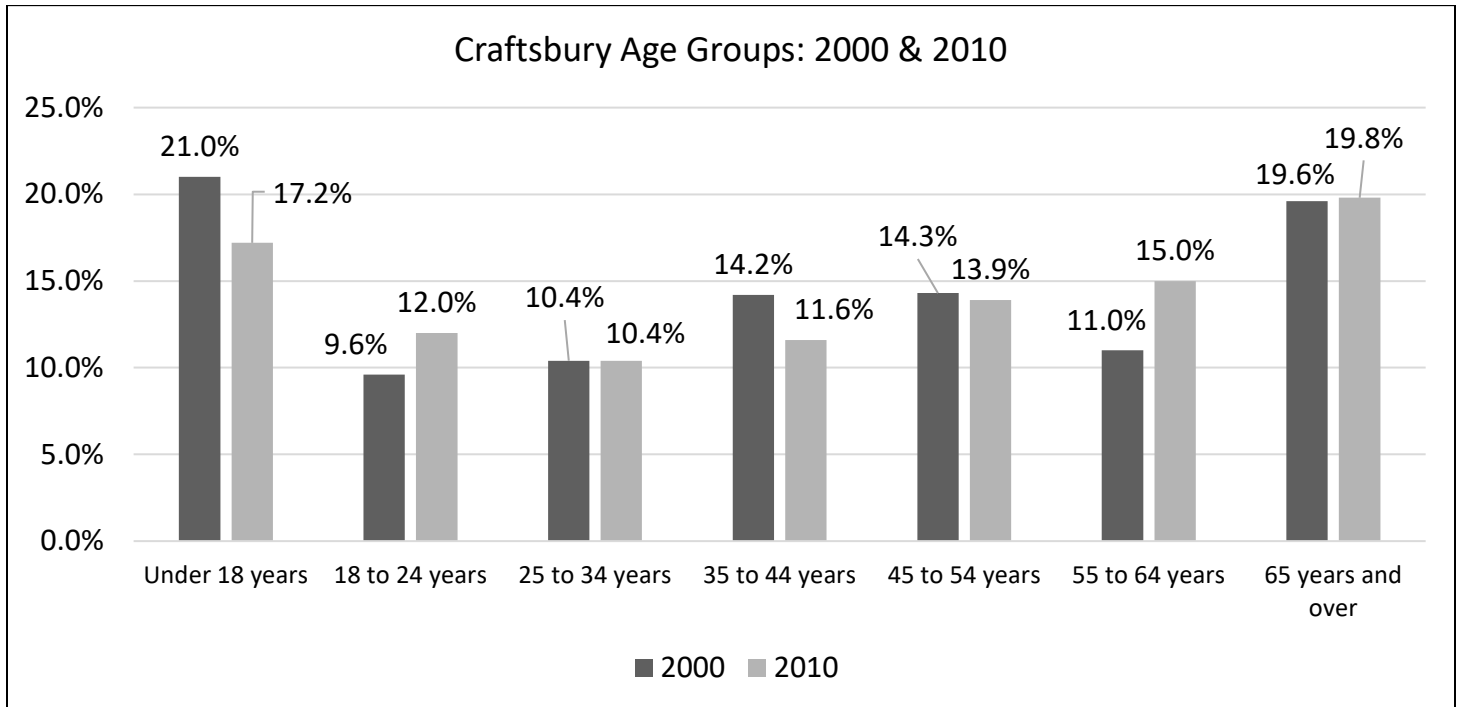
Source: US Census Bureau, 2000 & 2010 Decennial Census

## Median Age

Craftsbury		Orleans County		Vermont	
2000	2010	2000	2010	2000	2010
41.4	44.1	39.3	43.7	37.7	41.5

Source: US Census Bureau, 2000 & 2010 Decennial Census

## Recent Population Change by Age Categories: 2000 & 2010



Source: 2000 & 2010 Decennial Census

## Vermont Nativity

The most recent data available from the time period 2009-2013 reveal that 60.0% of Craftsbury residents are native to Vermont. This compares to 63.8% in Orleans County and 51.2% across the state.

Source: US Census Bureau, 2009-2013 American Community Survey Estimates

## Disabled Populations

	Craftsbury	Orleans County	Vermont
Total Non-Institutionalized, Disabled Population	11.6%	15.8%	13.3%
-Population Under 5	0.0%*	0.3%	1.3%
-Population 5-17 Years of Age	6.3%	7.8%	7.1%
-Population 18-64 Years of Age	7.1%	13.1%	11.1%
-Population 65+	31.5%	36.2%	33.7%

Source: US Census Bureau, 2009-2013 American Community Survey Estimates

\* Due to small sample size, margin of error is +/-28.4 % for Craftsbury's under 5 years of age disabled pop.

## Veteran Populations

	Craftsbury	Orleans County	Vermont
Total Veterans	79	2,366	48,456
-Gulf War (9/2001 or later) veterans	6.3%	4.8%	7.4%
-Gulf War (1990 to 8/2001) veterans	7.6%	10.5%	10.9%
-Vietnam era veterans	15.2%	35.9%	37.0%
-Korean War veterans	21.5%	11.4%	11.5%
-World War II veterans	24.1%	8.2%	8.9%

Source: US Census Bureau, 2009-2013 American Community Survey Estimates

---

## Income & Poverty

---

### Median Household Income

Craftsbury		Orleans County		Vermont	
2000	2009-2013	2000	2009-2013	2000	2009-2013
\$34,453	\$48,125	\$31,084	\$41,953	\$40,856	\$54,267

Source: U.S. Census Bureau, 2000 Census & 2009-2013 American Community Survey Estimates

### Poverty Status (Individuals)

Craftsbury		Orleans County		Vermont	
2000	2009-2013	2000	2009-2013	2000	2009-2013
13.8%	11.5%	14.1%	15.4%	9.4%	11.8%

Source: U.S. Census Bureau, 2000 Census & 2009-2013 American Community Survey Estimates

### \*Households Receiving SNAP Benefits in the Last 12 Months (Food Stamps)

Craftsbury		Orleans County		Vermont	
2005-2009	2009-2013	2005-2009	2009-2013	2005-2009	2009-2013
3.1%	11.9%	10.7%	16.3%	9.1%	13.4%

Source: US Census Bureau, 2005-2009 and 2009-2013 American Community Survey Estimates

Note: These data come from two five year estimates with one overlapping year.

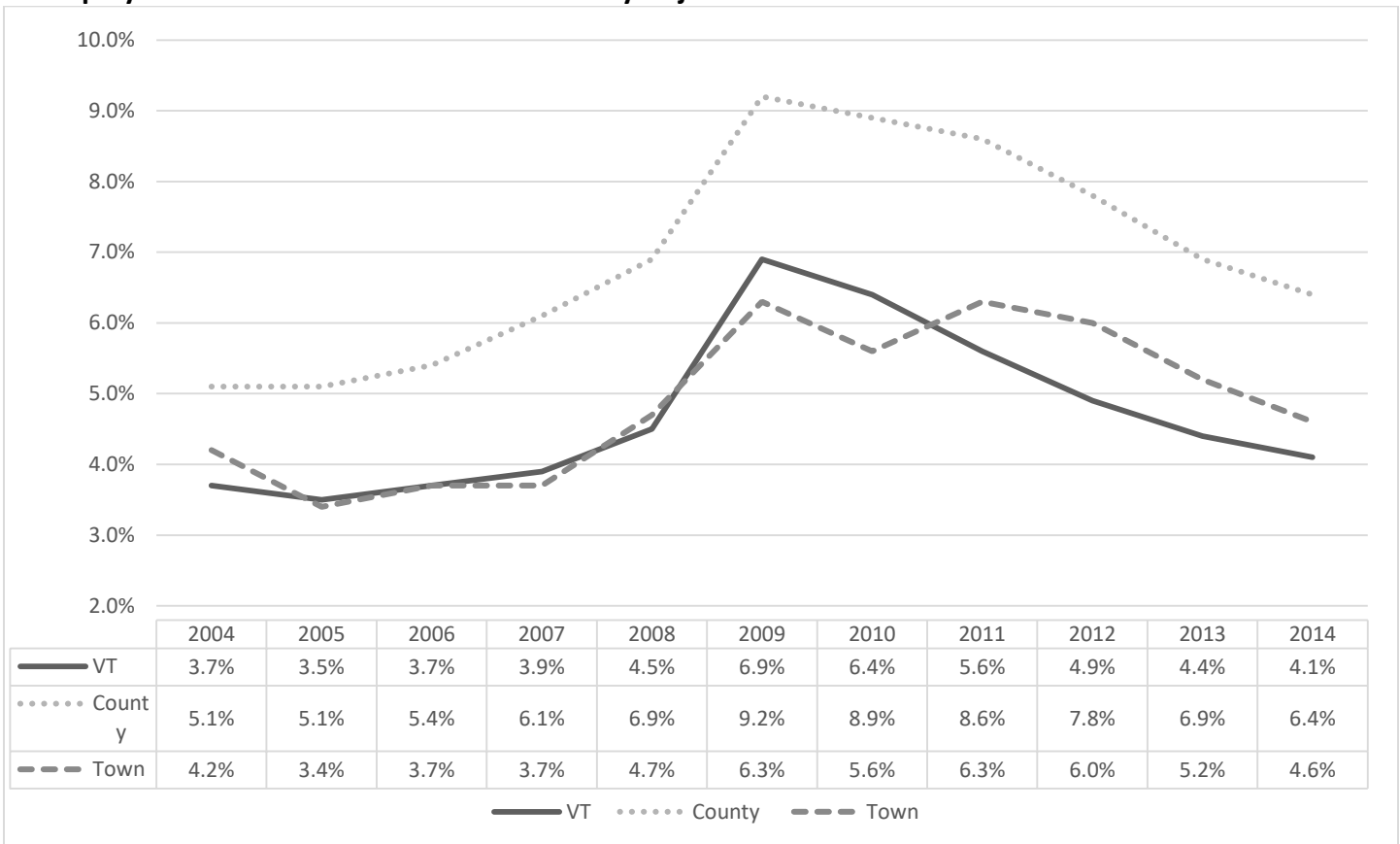
## Labor Force

### Population over 16 years of age in the Labor Force

Craftsbury		Orleans County		State	
2000	2009-2013	2000	2009-2013	2000	2009-2013
69.7%	62.9%	62.7%	60.2%	69.3%	67.6%

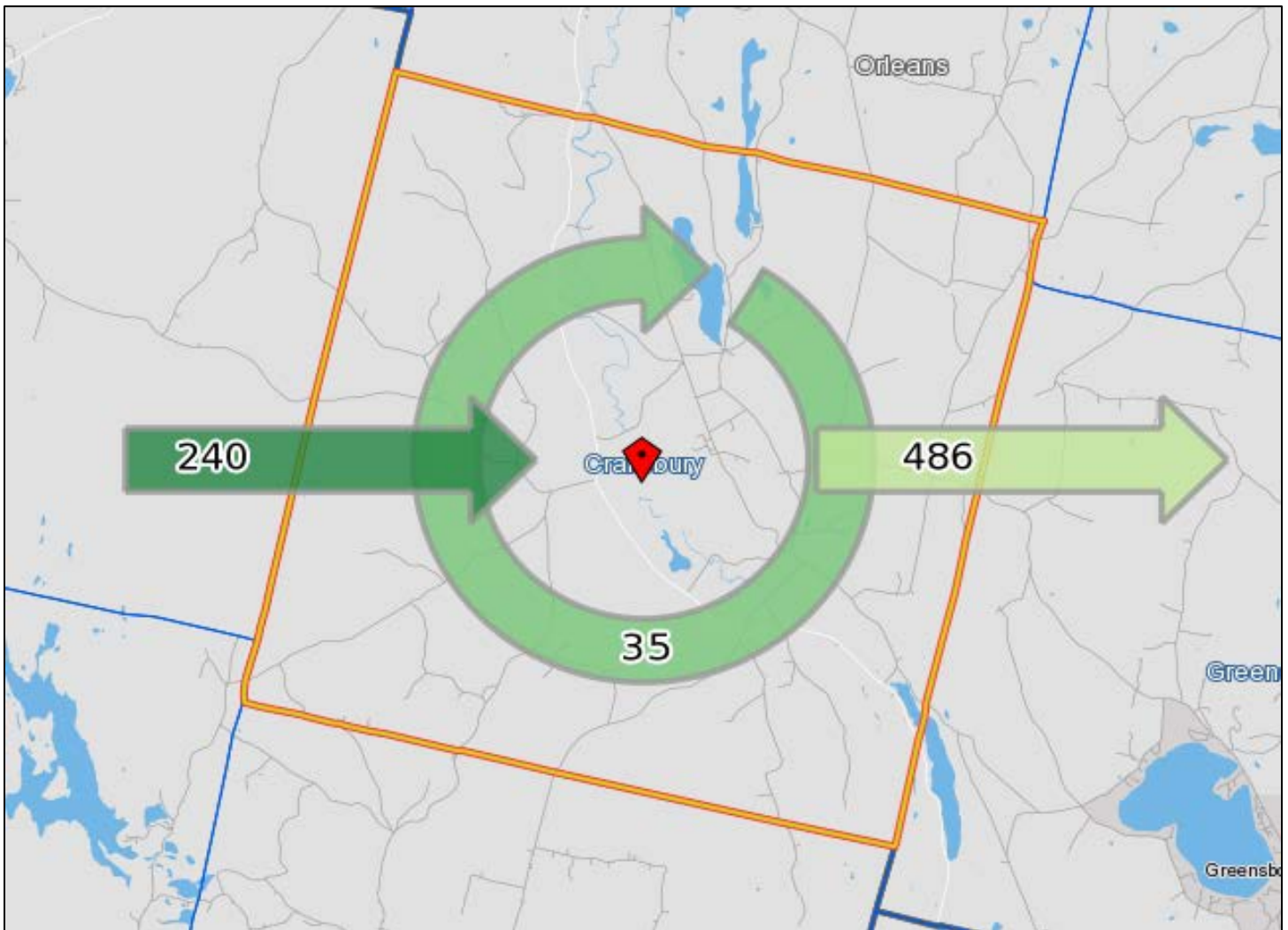
Source: US Census Bureau, 2000 Census and 2009-2013 American Community Survey Estimates

### Unemployment Rate 2004-2013 – Not Seasonally Adjusted\*



Source: Vermont Department of Labor \*Seasonally-adjusted data not available below state level.

**Craftsbury Labor Force, 2011 Inflow/Outflow (All Jobs)**



Source: US Census Bureau, Center for Economic Studies - [onthemap.ces.census.gov](http://onthemap.ces.census.gov)

**Craftsbury Labor Force, 2002 & 2011 Inflow/Outflow (All Jobs)**

	2002		2011	
	Count	Share	Count	Share
Employed in Craftsbury	221	100%	275	100%
Employed in Craftsbury but Live Outside	189	85.5%	240	87.3%
Employed in and Live in Craftsbury	32	14.5%	35	12.7%
Live in Craftsbury	326	100%	521	100%
Live in Craftsbury but Employed Outside	294	90.2%	486	93.3%
Live in and Employed in Craftsbury	32	9.8%	35	6.7%

Source: US Census Bureau, Center for Economic Studies

### Jobs in Craftsbury by Industry Sector, 2002 & 2011 (All Jobs)

Jobs by NAICS Industry Sector	2002		2011		VT 2011
	Count	Percent	Count	Percent	Percent
Agriculture, Forestry, Fishing and Hunting	3	0.9%	11	2.1%	0.8%
Mining, Quarrying, and Oil and Gas Extraction	0	0.0%	0	0.0%	0.2%
Utilities	0	0.0%	1	0.2%	0.7%
Construction	30	9.2%	26	5.0%	4.5%
Manufacturing	58	17.8%	60	11.5%	10.7%
Wholesale Trade	6	1.8%	13	2.5%	3.3%
Retail Trade	39	12.0%	74	14.2%	12.5%
Transportation and Warehousing	11	3.4%	24	4.6%	2.6%
Information	4	1.2%	10	1.9%	1.9%
Finance and Insurance	8	2.5%	13	2.5%	3.1%
Real Estate and Rental and Leasing	3	0.9%	0	0.0%	1.0%
Professional, Scientific, and Technical Services	10	3.1%	14	2.7%	5.0%
Management of Companies and Enterprises	0	0.0%	2	0.4%	0.5%
Admin & Support, Waste Mngmt and Remediation	3	0.9%	13	2.5%	3.2%
Educational Services	43	13.2%	89	17.1%	13.5%
Health Care and Social Assistance	40	12.3%	83	15.9%	17.2%
Arts, Entertainment, and Recreation	2	0.6%	15	2.9%	1.3%
Accommodation and Food Services	38	11.7%	27	5.2%	9.7%
Other Services (excluding Public Administration)	10	3.1%	13	2.5%	2.9%
Public Administration	18	5.5%	33	6.3%	5.4%

Source: US Census Bureau, Center for Economic Studies

### Industry Sectors in which Craftsbury Residents Work, 2002 & 2011 (All Jobs)

Jobs by NAICS Industry Sector	2002		2011		VT 2011
	Count	Percent	Count	Percent	Percent
Agriculture, Forestry, Fishing and Hunting	0	0.0%	41	14.9%	0.8%
Mining, Quarrying, and Oil and Gas Extraction	0	0.0%	0	0.0%	0.2%
Utilities	0	0.0%	0	0.0%	0.6%
Construction	7	3.2%	18	6.5%	4.4%
Manufacturing	0	0.0%	0	0.0%	10.5%
Wholesale Trade	2	0.9%	0	0.0%	3.3%
Retail Trade	11	5.0%	11	4.0%	12.7%
Transportation and Warehousing	0	0.0%	0	0.0%	2.5%
Information	0	0.0%	2	0.7%	1.9%
Finance and Insurance	2	0.9%	0	0.0%	3.1%
Real Estate and Rental and Leasing	0	0.0%	1	0.4%	1.0%
Professional, Scientific, and Technical Services	3	1.4%	3	1.1%	5.0%
Management of Companies and Enterprises	0	0.0%	0	0.0%	0.5%
Admin & Support, Waste Mngmt & Remediation	0	0.0%	2	0.7%	3.2%
Educational Services	98	44.3%	118	42.9%	13.9%
Health Care and Social Assistance	18	8.1%	24	8.7%	17.3%
Arts, Entertainment, and Recreation	2	0.9%	38	13.8%	1.3%
Accommodation and Food Services	50	22.6%	0	0.0%	9.2%
Other Services (excluding Public Administration)	17	7.7%	17	6.2%	2.9%
Public Administration	11	5.0%	0	0.0%	5.4%

Source: US Census Bureau, Center for Economic Studies



## Education

### School Enrollment Ten Year Trend 2003-2012\*

	2003	2008	2009	2010	2011	2012
<b>Pre K – 12<sup>th</sup> Grade (Craftsbury Schools)</b>	186	167	171	161	155	158

Source: Vermont Agency of Education \*Data for 2004-2007 not readily available.

### Educational Attainment

	Craftsbury		Orleans County		Vermont	
	2000	2009-2013	2000	2009-2013	2000	2009-2013
Population 25 years and over	785	779	17,814	19,402	404,223	433,401
-Less than 9th grade	8.5%	2.3%	9.7%	5.4%	5.1%	3.0%
-9th to 12th grade, no diploma	9.2%	4.5%	12.1%	8.4%	8.4%	5.6%
-High school graduate or equivalent	31.3%	42.1%	40.8%	40.1%	32.4%	30.8%
-Some college, no degree	12.5%	16.3%	15.1%	17.4%	16.9%	17.3%
-Associate's degree	6.8%	5.0%	6.2%	7.3%	7.7%	8.5%
-Bachelor's degree	20.9%	15.1%	10.7%	13.5%	18.3%	21.0%
-Graduate or professional degree	10.8%	14.6%	5.4%	7.8%	11.1%	13.8%

Source: US Census Bureau, 2000 Census & 2009-2013 American Community Survey Estimates

## Transportation

### Transportation to Work (Workers 16 years and over)

	Craftsbury		Orleans County		Vermont	
	2000	2009-2013	2000	2009-2013	2000	2009-2013
Percent Driving Alone	65.6%	64.1%	72.7%	78.3%	75.2%	74.5%
Percent Using Public Transportation	0.0%	0.0%	0.5%	0.1%	0.7%	1.2%
Percent Carpooling	9.7%	13.9%	12.0%	8.4%	11.9%	10%
Percent Working From Home	5.8%	12.6%	7.4%	7.2%	5.7%	7.1%
Average Travel Time to Work	23.8 min	27.1 min	21.5 min	22.8 min	21.6 min	22.2 min

Source: US Census Bureau, 2000 Census & 2009-2013 American Community Survey Estimates

## Housing

### Housing Characteristics

	Craftsbury		Orleans County		Vermont	
	2000	2009-2013	2000	2009-2013	2000	2009-2013
Total Housing Units	572	720	14,673	16,238	294,382	322,915
Owner occupied as percent of all occupied housing	83.4%	83.1%	74.1%	77.4%	70.6%	71.0%
Renter occupied as percent of all occupied housing	16.6%	16.9%	25.9%	22.6%	29.4%	29.0%
Vacant as percent of all housing	25.3%	36.8%	28.8%	32.0%	18.3%	20.4%
Rental Vacancy Rate	4.1%	0.0%*	6.6%	11.5%	5.7%	5.6%

Source: US Census Bureau, 2000 Census & 2009-2013 American Community Survey Estimates

\*Due to the small sample size, margin of error for 2013 ACS is +/- 20.4% for the Craftsbury Rental Vacancy Rate.

### Home Values (Owner occupied units)

	Craftsbury		Orleans County		Vermont	
	2000	2009-2013	2000	2009-2013	2000	2009-2013
Median Value: Owner Occupied Units	\$86,100	\$162,000	\$78,800	\$156,300	\$111,500	\$216,800

Source: US Census Bureau, 2000 Census & 2009-2013 American Community Survey Estimates

### Renter Housing Costs

	Craftsbury		Orleans County		Vermont	
	2000	2009-2013	2000	2009-2013	2000	2009-2013
Renter Households with housing costs at or above 35% of household income	28.6%	43.9%	29.1%	45.7%	29.5%	41.5%

Source: US Census Bureau, 2000 Decennial Census & 2009-2013 American Community Survey Estimates